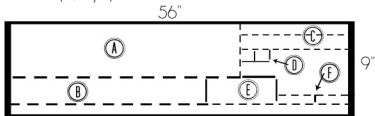


# Cutting Layouts

VINYL (1/4yd)



A: 36" X 5" (main body)

B: 30" x 3" (crossbody strap)

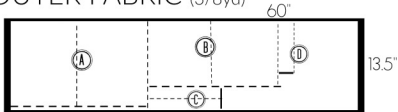
C: (2x) 20" x 1.5" (shoulder straps)

D: (2x) 1.5" x 1.5"

E: 10" x 3" (crossbody strap)

F: (2x) 1" x 4" (crossbody strap)

OUTER FABRIC (3/8yd)



A: (2x) 11" X 13" (main body)

B: (2x) 11" x 9" (outer pocket)

C: (2x) 2" x 15" (top zipper pieces)

D: 8" x 3" (key fob)